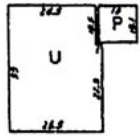


4 TH LEVEL

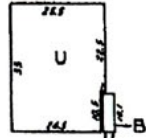
AUCTION 8A

010202402

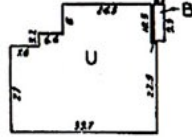
TYPICAL BUILDING DETAILS
SCALE 1" = 30'



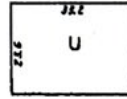
UNITS: 101, 115, 236
& 245
REVERSE UNITS: 114,
133 & 246



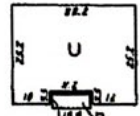
UNITS: 102, 202, 214, 223, 226,
302, 314, 323, 326, 346, 402, 414,
423, 426, 446 & 456
REVERSE UNITS: 201, 212, 224,
234, 301, 312, 324, 334, 346, 401,
412, 424, 434, 445 & 455



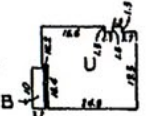
UNITS: 103 & 203
REVERSE UNITS: 111 & 211



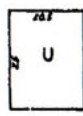
UNITS: 104, 106, 108, 110,
119, 120, 121, 128, 227, 229,
231, 232, 237, 238, 239, 240,
241, 242, 243 & 244



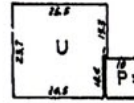
UNITS: 106 & 109
REVERSE UNITS: 107
& 207



UNIT: 112



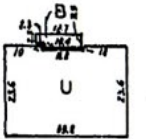
UNITS: 122, 125, 218,
222, 225, 230, 318, 322,
325, 330, 422 & 426



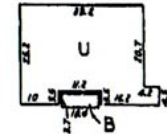
UNIT: 123



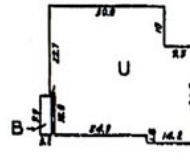
UNIT: 124



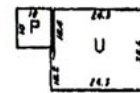
UNITS: 204, 208, 216, 218, 220, 304,
308, 316, 319, 320, 327, 331, 337, 340,
341, 344, 404, 406, 416, 419, 427, 431,
437, 440, 441, 444, 527, 531, 537, 540,
541 & 544
REVERSE UNITS: 205, 210, 217, 221,
228, 305, 310, 317, 321, 328, 329, 332,
338, 339, 342, 343, 405, 410, 417, 421,
429, 432, 436, 439, 442, 443, 529, 532,
538, 539, 542 & 543



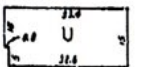
UNIT: 206
REVERSE UNIT: 209



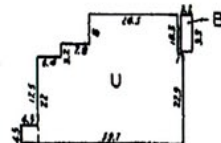
UNITS: 215, 315 & 415
REVERSE UNITS: 233, 333
& 433



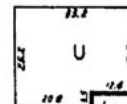
UNIT: 235



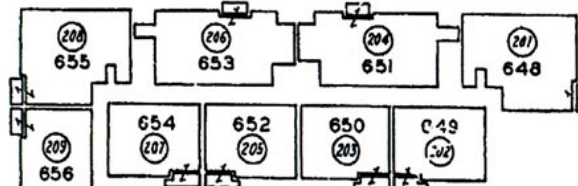
UNIT: 247



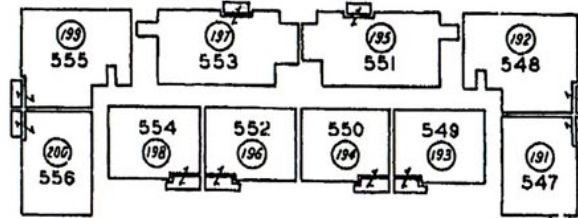
UNIT: 303
REVERSE UNIT: 311



UNIT: 309 & 308
REVERSE UNIT: 307



6 TH LEVEL



5 TH LEVEL

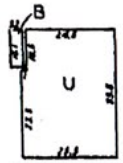
SCALE 1" = 40'

SUBDIVISION OF AIRSPACE
CONDOMINIUM TRACT NO. 36170

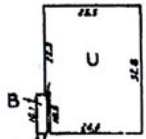
For common area and note on dimensions see sheet 1.

AUCTION 8B

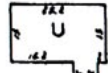
TYPICAL BUILDING DETAILS



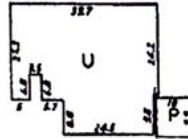
UNITS: 335, 435,
& 536



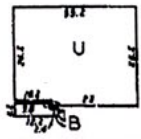
UNITS: 336, 436
& 536



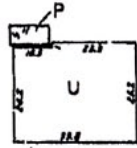
UNIT: 347



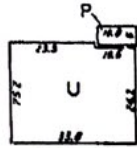
UNIT: 348



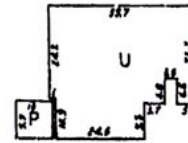
UNITS: 352, 452, 652,
& 652
REVERSE UNITS: 354,
454, 554 & 654



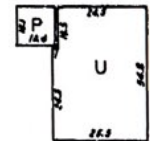
UNIT: 351



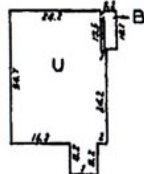
UNIT: 353



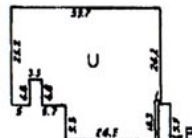
UNIT: 355



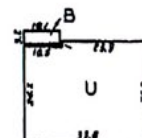
UNIT: 356



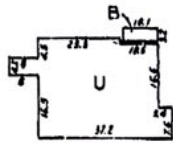
UNIT: 447



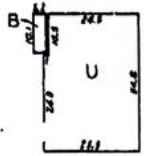
UNITS: 448, 548 & 648
REVERSE UNITS: 455, 555
& 655



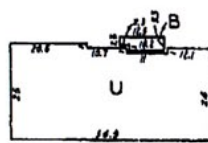
UNIT: 451



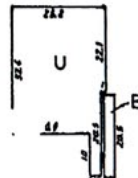
UNIT: 453



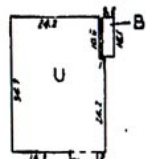
UNITS: 456, 556
& 656



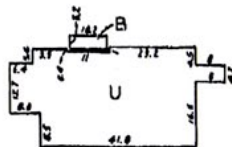
UNIT: 420
REVERSE UNIT: 428



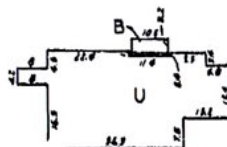
UNIT: 526
REVERSE UNIT:
534



UNIT: 547



UNITS: 556 & 651



UNITS: 553 & 653